

HIGH PRESSURE
WATER JET
CLEANING



INTRODUCTION:-

We are the India's fastest growing High Pressure Triplex Plunger Pump manufacturing company.

We are successfully serving quality material with standup service since 2011. Lynx Pressure system served in all region of India and as well as Abroad also. We have huge client base in abroad too.

Lynx Pressure System is succeeded on base of commitment for 24X7 service 365days.


We have developed a product range from 5 hp to 240 hp and pressure up to 1100 bar (16 k psi). **Lynx Pressure System** is a professional Manufacturer and Supplier of High Pressure Triplex plunger Pumps which are highly suitable for Industrial Cleaning application. Due to its high efficiency our Triplex plunger pump is suitable for Tube and pipe cleaning, Surface Preparation, boiler tube cleaning, condenser tube cleaning, , Evaporator Cleaning, Marine Application, Pipe Line Hydrotest and many more etc...

We supply full system on trolley mounted as well as base frame mounted operated through Diesel Engine & Electric Motor with accessories such as high pressure gun, High pressure water blast hose pipe, Nozzles, PRV, extra accessories as per need.

We have succeeded to become a trustworthy organization for our clients with the support of our dedicated team members. Our professionals have wide industrial knowledge and strive hard to serve our clients with the best. Hence, our products are highly popular among our clients for their superior performance, quality as per client's specified specifications.

PRODUCT RANGE

Main Series	Min.LPM	Max.Lpm	Min. Pressure Bar	Max. Pressure Bar	Max. Power hp
HHP	14	50	50	500	30
BHF	51	139	100	180	40
BMP	22	55	240	500	40
BHP	5	17	750	1200	40
MP	35	280	135	1000	100
MF-HF	62	445	145	700	240
HP	42	51	1000	1100	120



Lynx Pressure System

Ability to clean many times faster than conventional cleaning system to reduce breakdown time
Its helps to clean system without dismantling its saves precious time and money.
“Eco Environmentally process” since no hazardous chemicals involved.

Application

- › Water Sand Blasting Pump
- › Tank Cleaning System
- › Paint & Rust Removal System
- › High Pressure Test System
- › Vessel Cleaning System
- › Tube Cleaning
- › Heavy Vehicle Pressure Washer,
- › Misting System
- › Fogging System,
- › Hydro - Blaster Pressure Washer,
- › Hand Pump For Hydro Test,
- › Pumps Spare Parts,
- › Nozzles
- › Thermal Power plants
- › Oil Refineries

Industries

- Municipal Corporation <
- Oil & Petroleum <
- Fertilizer <
- Chemical <
- Paper & Pulp <
- Petrochemicals Plants <
- Milk & Food Processing <
- Steel <
- Sugar <
- Thermal Power plants <
- Oil Refineries <
- Many More.....



BARE PUMP



Design Features

- › Plunger Head :- Forged Brass
- › Plungers :- Ceramic
- › Main Body :- Allu.Die Cast
- › Connecting Rod :- Allu.Die Cast
- › Crank Shaft :- Alloy Steel
- › Plunger Seal :- Buna "n" Seal
- › Valve Assembly :- SS 304
- › Oil :- 15 W40

HHP Series Model Selection Chart

PUMP MODELS	Min.LPM	Max.LPM	Min. Pressure (Bar)	Max. Pressure (Bar)	Max. Power HP
<u>NHD</u>	<u>8.5</u>	<u>14</u>	<u>60</u>	<u>150</u>	<u>5</u>
<u>NPM</u>	<u>15</u>	<u>18</u>	<u>120</u>	<u>250</u>	<u>15</u>
<u>NMT</u>	<u>18</u>	<u>21</u>	<u>150</u>	<u>200</u>	<u>10</u>
<u>NLT</u>	<u>25</u>	<u>30</u>	<u>125</u>	<u>250</u>	<u>15</u>
<u>PXI</u>	<u>11</u>	<u>30</u>	<u>250</u>	<u>500</u>	<u>40</u>
<u>XLT</u>	<u>18</u>	<u>55</u>	<u>100</u>	<u>300</u>	<u>25</u>
<u>XXT</u>	<u>42</u>	<u>70</u>	<u>120</u>	<u>200</u>	<u>30</u>

★ Detail Catalogue In our Website ★

Salient Features

- › Appropriate Pump Speed For High Service Life.
- › Top Open Power Frame For Easy Maintenance.

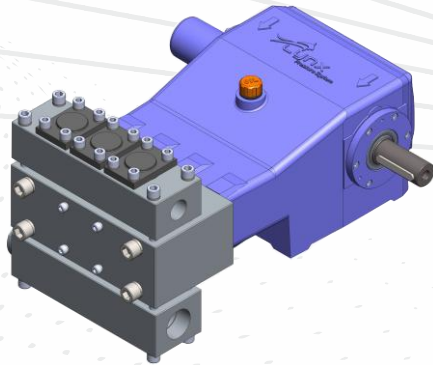


HHP System

We Supply



BARE PUMP



Design Features

› Plunger Head	-: Forged 304 / 316	› Stroke	-: 40MM
› Plungers	-: T.C Coated	› Max Inlet Pressure	-: 3Bar
› Main Body	-: High Graded Casting	› Oil Capacity	-: 4Ltr
› Connecting Rod	-: S.G. Iron	› Weight	-: 60Kg
› Crank Shaft	-: S.G. Iron	› Inlet Ports	-: 1 1/2"
› Plunger Seal	-: PTFE Aramide	› Discharge	-: 3/4"
› Valve Assembly	-: PH 17-4	› Shaft Diameter	-: 35MM
› Oil	-: 15 W40		

BHF Series Model Selection Chart

MODEL	SPM	Flow(LPM)	MAX. RATED PRESSURE kg/cm2(MOTOR-HP)		
<u>BHF30</u>	<u>950</u>	<u>80</u>	<u>180 (40)</u>	<u>130 (40)</u>	<u>80 (20)</u>
	<u>730</u>	<u>61</u>	<u>180 (30)</u>	-	-
	<u>610</u>	<u>51</u>	<u>180 (25)</u>	<u>130 (20)</u>	-
<u>BHF32</u>	<u>950</u>	<u>91</u>	<u>150 (40)</u>	<u>125 (30)</u>	<u>100 (25)</u>
	<u>730</u>	<u>70</u>	<u>150 (30)</u>	<u>125 (25)</u>	<u>100 (20)</u>
	<u>610</u>	<u>58</u>	<u>150 (25)</u>	<u>125 (20)</u>	<u>98 (15)</u>
<u>BHF36</u>	<u>950</u>	<u>115</u>	<u>120 (40)</u>	<u>99 (30)</u>	<u>80 (25)</u>
<u>BHF40</u>	<u>730</u>	<u>110</u>	<u>100 (30)</u>	<u>75 (25)</u>	<u>50 (15)</u>
<u>BHF45</u>	<u>730</u>	<u>139</u>	<u>100 (40)</u>	<u>75 (30)</u>	<u>50(20)</u>

★ Detail Catalogue In our Website ★

Salient Features

- › Compact, Robust Design, Rugged Construction With Silent Operation.
- › Pump Plungers Are Powered By Forged Crankshaft By Heavy Cylindrical Roller Bearings.
- › Forged Connecting Rod With Low Friction White Metal Bearing It Could Easily Replace Prevents Damage Of Connecting Rod.
- › Plunger Kits Are Easily And Hassle Free Interchangeable.
- › Graded Cast Iron (FG 260) Crank Case With Splash Lubrication.
- › Ss 304/316 Pump Head.

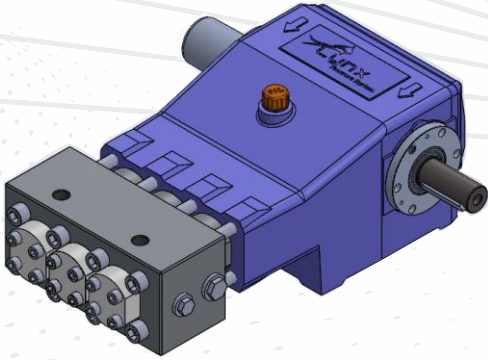


BHF System

We Supply



BARE PUMP



Design Features

› Plunger Head	:- Forged 304 / 316	› Stroke	:- 40MM
› Plungers	:- T.C Coated	› Max Inlet Pressure	:- 3Bar
› Main Body	:- High Graded Casting	› Oil Capacity	:- 4Ltr
› Connecting Rod	:- S.G. Iron	› Weight	:- 60Kg
› Crank Shaft	:- S.G. Iron	› Inlet Ports	:- 3/4"
› Plunger Seal	:- PTFE Aramide	› Discharge	:- 1/2"
› Valve Assembly	:- PH 17-4	› Shaft Diameter	:- 35MM
› Oil	:- 15 W40		

BMP Series Model Selection Chart

MODEL	SPM	Flow(LPM)	MAX. RATED PRESSURE kg/cm2(MOTOR-HP)			
<u>BMP18</u>	<u>950</u>	<u>30</u>	<u>500 (40)</u>	<u>360 (30)</u>	<u>315 (25)</u>	<u>270 (20)</u>
	<u>730</u>	<u>22</u>	<u>480 (30)</u>	<u>400 (25)</u>	<u>320 (20)</u>	-
<u>BMP20</u>	<u>950</u>	<u>35</u>	<u>390 (40)</u>	<u>300 (30)</u>	<u>245 (25)</u>	<u>195 (20)</u>
	<u>730</u>	<u>27</u>	<u>380 (30)</u>	<u>315 (25)</u>	<u>250 (20)</u>	<u>190 (15)</u>
<u>BMP22</u>	<u>950</u>	<u>43</u>	<u>320 (40)</u>	<u>240 (30)</u>	<u>200 (25)</u>	<u>160(20)</u>
	<u>730</u>	<u>33</u>	<u>320 (30)</u>	<u>260 (25)</u>	<u>210 (20)</u>	<u>160 (15)</u>
<u>BMP25</u>	<u>950</u>	<u>55</u>	<u>240 (40)</u>	<u>190 (30)</u>	<u>155 (25)</u>	<u>125 (20)</u>

★ Detail Catalogue In our Website ★

Salient Features

- › Compact, Robust Design, Rugged Construction With Silent Operation.
- › Pump Plungers Are Powered By Forged Crankshaft By Heavy Cylindrical Roller Bearings.
- › Forged Connecting Rod With Low Friction White Metal Bearing It Could Easily Replace Prevents Damage Of Connecting Rod.
- › Plunger Kits Are Easily And Hassle Free Interchangeable.
- › Graded Cast Iron (FG 260) Crank Case With Splash Lubrication.
- › Ss 304/316 Pump Head.



BMP System

We Supply



HETERO

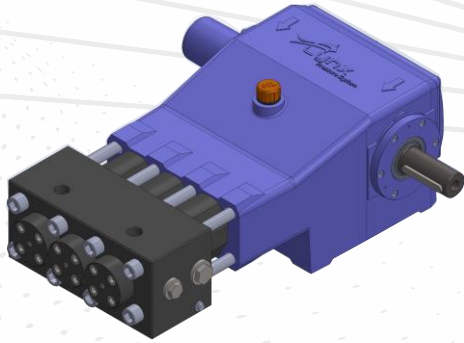


HYUNDAI
ENGINEERING & CONSTRUCTION



National Institute of Rock Mechanics
राष्ट्रीय शिला यांत्रिकी संस्थान

BARE PUMP



Design Features

› Plunger Head	:- Forged 304 / 316	› Stroke	:- 40MM
› Plungers	:- T.C Coated	› Max Inlet Pressure	:- 3Bar
› Main Body	:- High Graded Casting	› Oil Capacity	:- 4Ltr
› Connecting Rod	:- S.G. Iron	› Weight	:- 60Kg
› Crank Shaft	:- S.G. Iron	› Inlet Ports	:- 3/4"
› Plunger Seal	:- PTFE Aramide	› Discharge	:- 1/2"
› Valve Assembly	:- PH 17-4	› Shaft Diameter	:- 35MM
› Oil	:- 15 W40		

BHP Series Model Selection Chart

MODEL	SPM	Flow(LPM)	MAX. RATED PRESSURE kg/cm2(MOTOR-HP)			
<u>BHP12</u>	<u>730</u>	<u>9</u>	<u>1200 (30)</u>	<u>1000 (25)</u>	<u>800 (20)</u>	<u>600 (15)</u>
	<u>540</u>	<u>7</u>	<u>1200 (25)</u>	<u>1000 (20)</u>	<u>800 (15)</u>	<u>600 (12.5)</u>
	<u>420</u>	<u>5</u>	<u>1200 (20)</u>	<u>1000 (15)</u>	<u>800 (12.5)</u>	<u>600 (10)</u>
<u>BHP14</u>	<u>730</u>	<u>13</u>	<u>1000 (40)</u>	<u>800 (30)</u>	<u>600 (25)</u>	<u>400 (15)</u>
<u>BHP16</u>	<u>730</u>	<u>17</u>	<u>750 (40)</u>	<u>600 (30)</u>	<u>500 (25)</u>	-

★ Detail Catalogue In our Website ★

Salient Features

- › Compact, Robust Design, Rugged Construction With Silent Operation.
- › Pump Plungers Are Powered By Forged Crankshaft By Heavy Cylindrical Roller Bearings.
- › Forged Connecting Rod With Low Friction White Metal Bearing It Could Easily Replace Prevents Damage Of Connecting Rod.
- › Plunger Kits Are Easily And Hassle Free Interchangeable.
- › Graded Cast Iron (FG 260) Crank Case With Splash Lubrication.
- › Ss 304/316 Pump Head.



BHP System

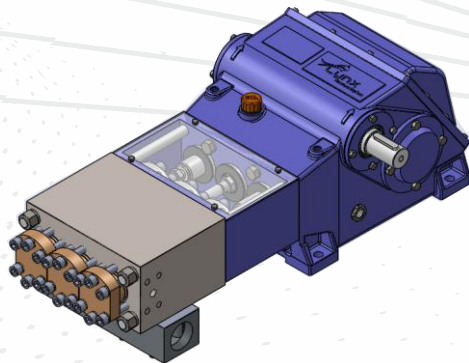
We Supply



Sumec INDUSTRIES LIMITED



BARE PUMP



Design Features

› Plunger Head	:- Forged 410	› Oil	:- SAE 320
› Plungers	:- T.C Coated	› Stroke	:- 75MM
› Main Body	:- High Graded Casting	› Max Inlet Pressure	:- 3Bar
› Connecting Rod	:- S.G. Iron	› Oil Capacity	:- 7Ltr
› Crank Shaft	:- Forged EN-24	› Weight	:- 140Kg
› Gear Box	:- Hardened And Teeth Grounded Helical Gear And Pinion Shaft	› Inlet Ports	:- 2"
› Plunger Seal	:- PTFE Aramide	› Discharge	:- 1/2"
› Valve Assembly	:- PH 17-4	› Shaft Diameter	:- 40MM

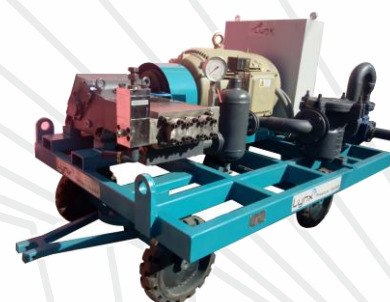
MP Series Model Selection Chart

MODEL	FLOW (LPM)	MAX. RATED PRESSURE kg/cm ²		
		60 Hp	75 HP	100 HP-
<u>MP3575P</u>	<u>35</u>	<u>620</u>	<u>750</u>	-
<u>MP4580P</u>	<u>45</u>	<u>500</u>	<u>625</u>	<u>840</u>
<u>MP5270P</u>	<u>52</u>	<u>430</u>	<u>530</u>	<u>720</u>
<u>MP6260P</u>	<u>62</u>	<u>360</u>	<u>450</u>	<u>600</u>
<u>MP7050P</u>	<u>70</u>	<u>310</u>	<u>375</u>	<u>510</u>
<u>MP8045P</u>	<u>80</u>	<u>270</u>	<u>330</u>	<u>450</u>
<u>MP9040P</u>	<u>90</u>	<u>240</u>	<u>300</u>	<u>400</u>
<u>MP11530P</u>	<u>115</u>	<u>190</u>	<u>230</u>	<u>315</u>
<u>MP14525P</u>	<u>145</u>	<u>150</u>	<u>185</u>	<u>250</u>

★ Detail Catalogue In our Website ★

Salient Features

- › Compact, Robust Design, Rugged Construction With Silent Operation.
- › Pump Plungers Are Powered By Forged Crankshaft By Heavy Cylindrical Roller Bearings.
- › Forged Connecting Rod With Low Friction White Metal Bearing It Could Easily Replace Prevents Damage Of Connecting Rod.
- › Plunger Kits Are Easily And Hassle Free Interchangeable.
- › Graded Cast Iron (fg 260) Crank Case With Splash Lubrication.
- › Ss 410 Pump Head.



MP System

We Supply



Eco Protection Engineers Pvt Ltd
(An ISO 9001 : 2008 Certified Company)



GODREJ & BOYCE



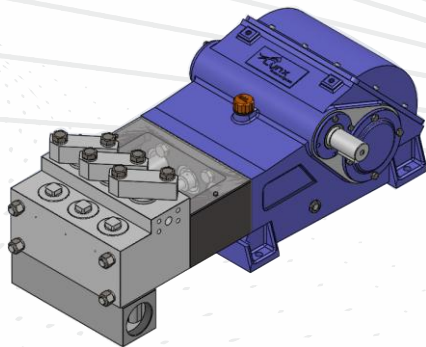
REPL
An Oil Field Service Co.

MF Series & HF Series

High & Medium Flow Gear Driven Series



BARE PUMP



Design Features

› Plunger Head	-: Forged 410	› Oil	-: SAE 320
› Plungers	-: T.C Coated	› Stroke	-: 105MM
› Main Body	-: High Graded Casting	› Max Inlet Pressure	-: 3Bar
› Connecting Rod	-: S.G. Iron	› Oil Capacity	-: 8Ltr
› Crank Shaft	-: Forged EN-24	› Weight	-: 220Kg
› Gear Box	-: Hardened And Teeth Grounded Helical Gear And Pinion Shaft	› Inlet Ports	-: 3"
› Plunger Seal	-: PTFE Aramide	› Discharge	-: 1/2"
› Valve Assembly	-: PH 17-4	› Shaft Diameter	-: 48MM

Model Selection Chart

MODEL	Flow(LPM)	MAX. RATED PRESSURE kg/cm2 (MOTOR -HP)		
		100 Hp	120 HP	150 HP
<u>MF 24</u>	<u>62</u>	<u>655</u>	<u>790</u>	-
<u>MF 26</u>	<u>73</u>	<u>560</u>	<u>670</u>	<u>770</u>
<u>MF 28</u>	<u>84</u>	<u>485</u>	<u>580</u>	<u>665</u>
<u>MF 30</u>	<u>97</u>	<u>420</u>	<u>505</u>	<u>580</u>
<u>MF 32</u>	<u>110</u>	<u>370</u>	<u>445</u>	<u>505</u>
<u>MF 36</u>	<u>139</u>	<u>285</u>	<u>340</u>	<u>400</u>
<u>HF 40</u>	<u>172</u>	<u>225</u>	<u>270</u>	<u>325</u>
<u>HF 45</u>	<u>218</u>	<u>175</u>	<u>210</u>	<u>225</u>
<u>HF 50</u>	<u>269</u>	<u>145</u>	<u>170</u>	<u>205</u>
<u>HF 55</u>	<u>326</u>	<u>120</u>	<u>140</u>	<u>170</u>
<u>HF 60</u>	<u>367</u>	<u>100</u>	<u>120</u>	<u>145</u>

Salient Features

★ Detail Catalogue In our Website ★

- › Compact, Robust Design, Rugged Construction With Silent Operation.
- › Pump Plungers Are Powered By Forged Crankshaft By Heavy Cylindrical Roller Bearings.
- › Forged Connecting Rod With Low Friction White Metal Bearing It Could Easily Replace Prevents Damage Of Connecting Rod.
- › Plunger Kits Are Easily And Hassle Free Interchangeable.
- › Graded Cast Iron (FG 260) Crank Case With Splash Lubrication.
- › Ss 410 Pump Head.



MF System

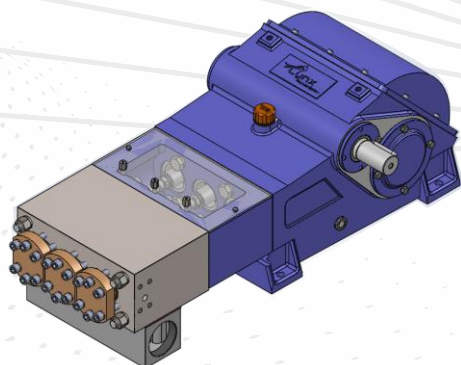
We Supply



TEJAS CONSTRUCTIONS & INFRASTRUCTURE
PVT. LTD.



BARE PUMP



Design Features

› Plunger Head	:- Forged 410	› Oil	:- SAE 320
› Plungers	:- T.C Coated	› Stroke	:- 105MM
› Main Body	:- High Graded Casting	› Max Inlet Pressure	:- 3Bar
› Connecting Rod	:- S.G. Iron	› Oil Capacity	:- 8Ltr
› Crank Shaft	:- Forged EN-24	› Weight	:- 220Kg
› Gear Box	:- Hardened And Teeth Grounded Helical Gear And Pinion Shaft	› Inlet Ports	:- 3"
› Plunger Seal	:- PTFE Aramide	› Discharge	:- 1/2"
› Valve Assembly	:- PH 17-4	› Shaft Diameter	:- 48MM

HP Series Model Selection Chart

MODEL

Flow(LPM)

MAX. RATED PRESSURE kg/cm2 (MOTOR -HP)

120 HP

150 Hp

HP4210P

42

1000

-

HP5210P

52

840

1100

★ Detail Catalogue In our Website ★

Salient Features

- › Compact, Robust Design, Rugged Construction With Silent Operation.
- › Pump Plungers Are Powered By Forged Crankshaft By Heavy Cylindrical Roller Bearings.
- › Forged Connecting Rod With Low Friction White Metal Bearing It Could Easily Replace Prevents Damage Of Connecting Rod.
- › Plunger Kits Are Easily And Hassle Free Interchangeable.
- › Graded Cast Iron (FG 260) Crank Case With Splash Lubrication.
- › Ss 410 Pump Head.



HP System

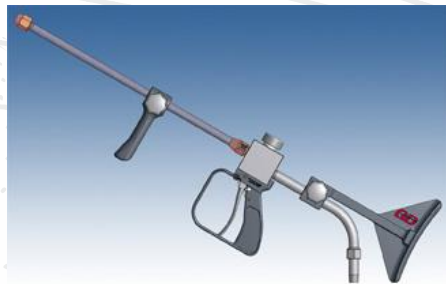
We Supply



**SHREENATH MHASKOBA
SAKHAR KARKHANA LTD.**



Accessories For High Pressure Pump



Dump Gun



Trigger Gun



Rigid Lance



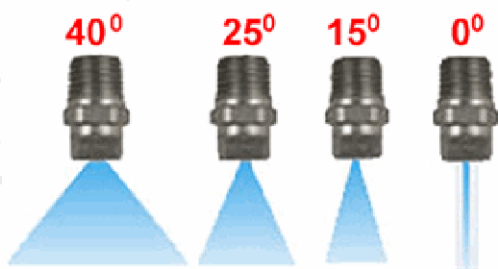
Unloader Valve



Ball Valve



Non Return Valve



Degree Nozzles



Rotating Nozzle



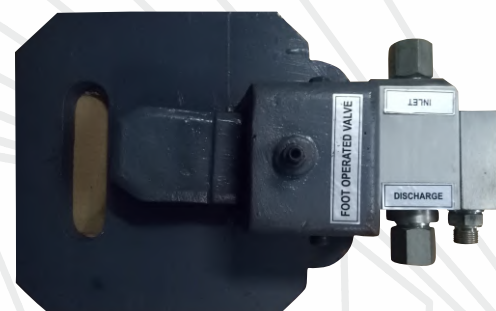
Tube Cleaning Nozzle



Pressure Gauge



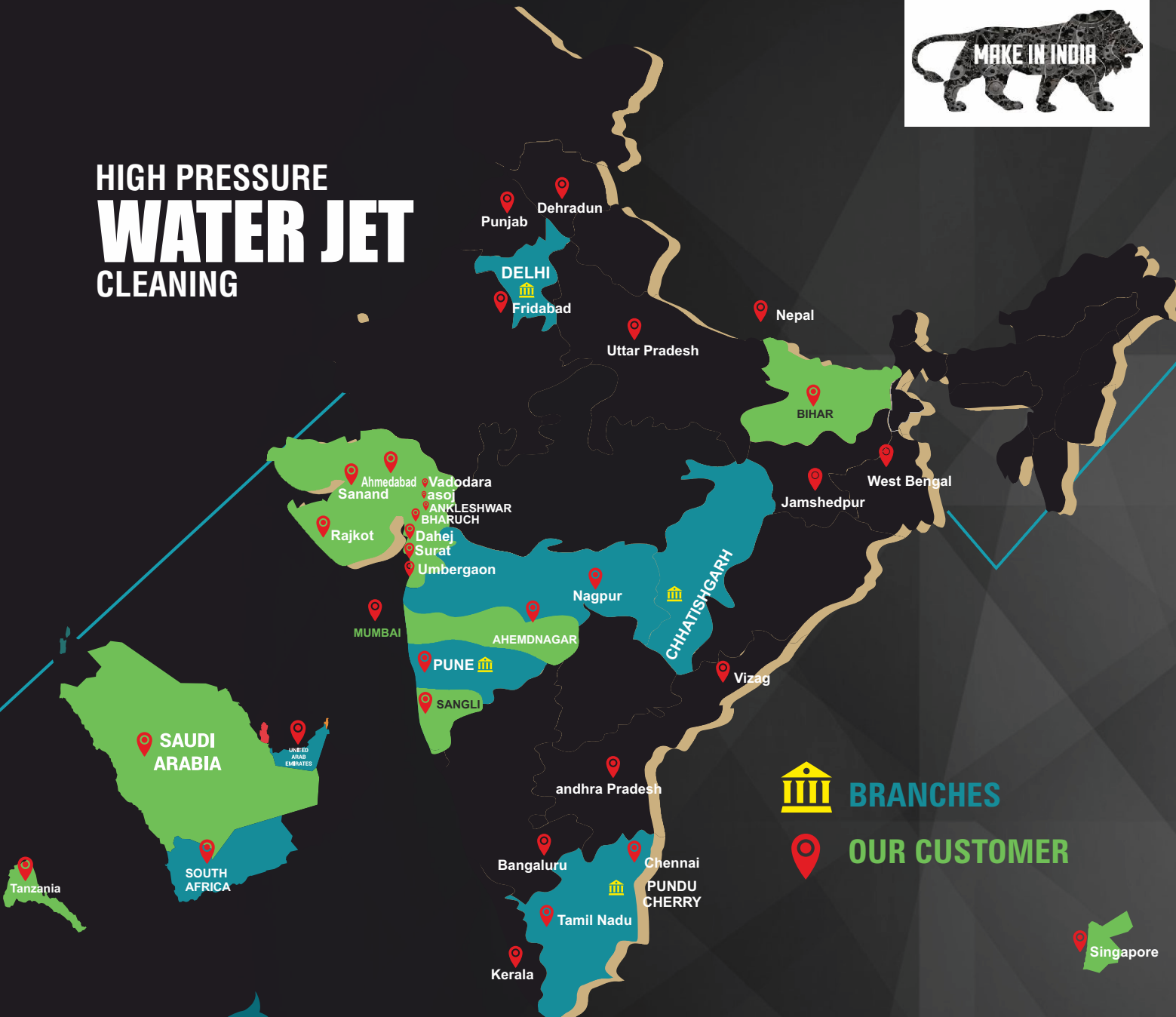
Flexible Lance



Foot Operated Valve



HIGH PRESSURE WATER JET CLEANING



BRANCHES



OUR CUSTOMER



LynX Pressure System

52, Yamuna Estate, Plot No 20/1

Opp. Neo Plast, Phase-1, Vatva GIDC,
Ahmedabad

Gujarat- 382445

Landline No :-079 40060055

Email Id – enquiry@lynxpressuresystem.com

Website – www.lynxpressuresystem.com

Contact No – Sales :- +91 99099 83982

24 x 7 Service :- +91 95102 54254

